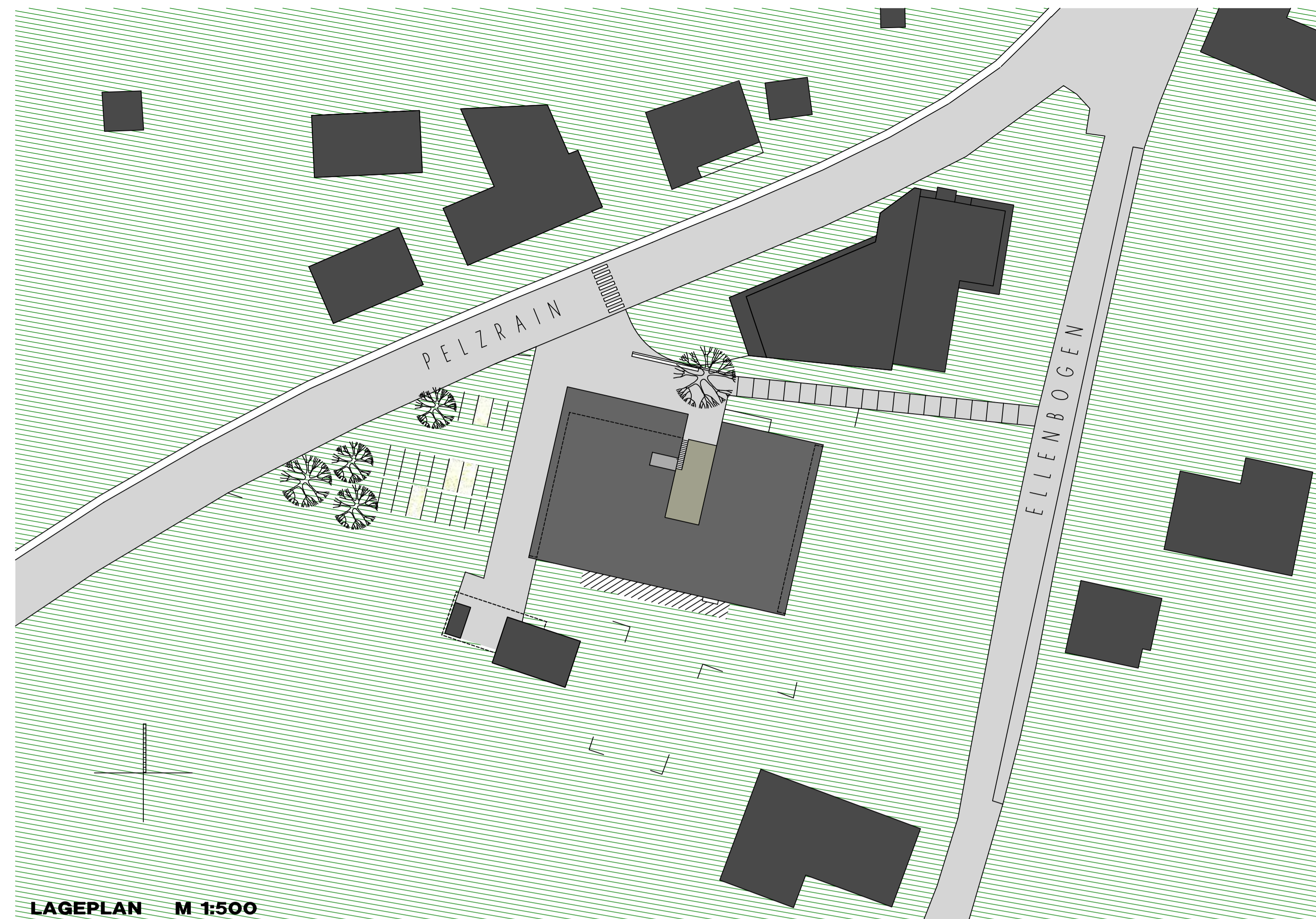
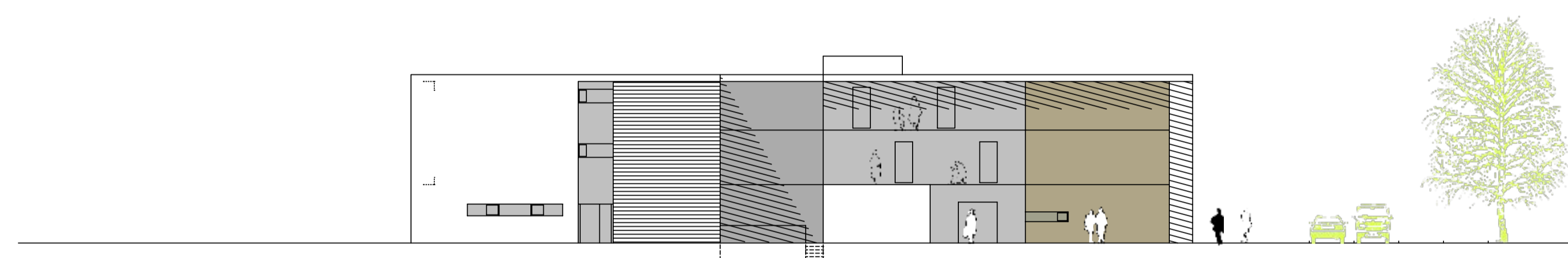


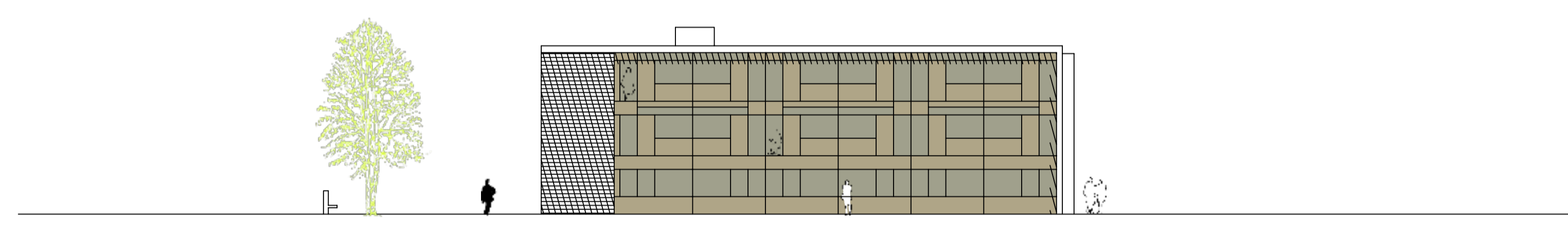
GRUNDRISS ERDGESCHOSS M 1:200



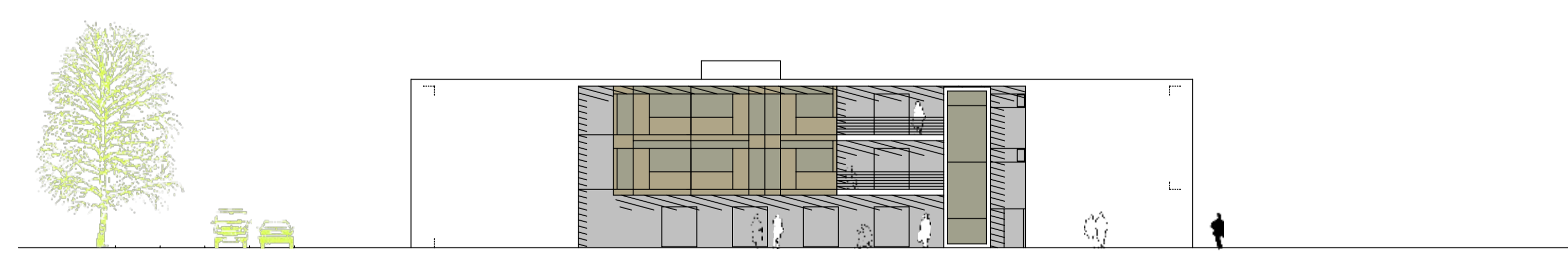
LAGEPLAN M 1:500



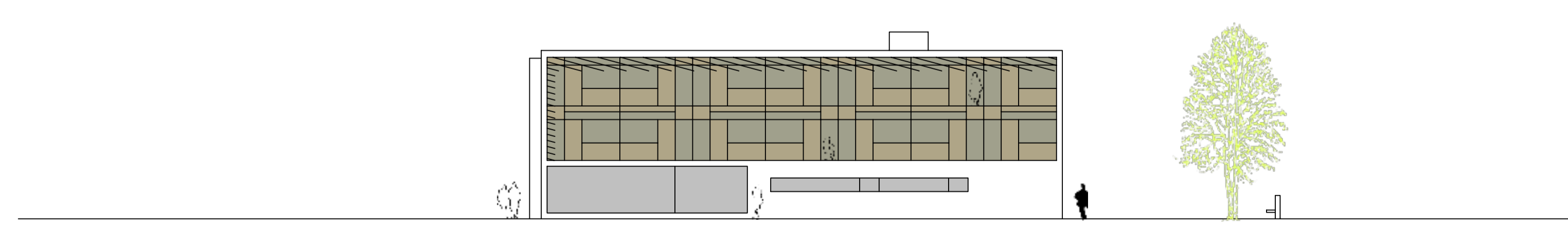
NORD



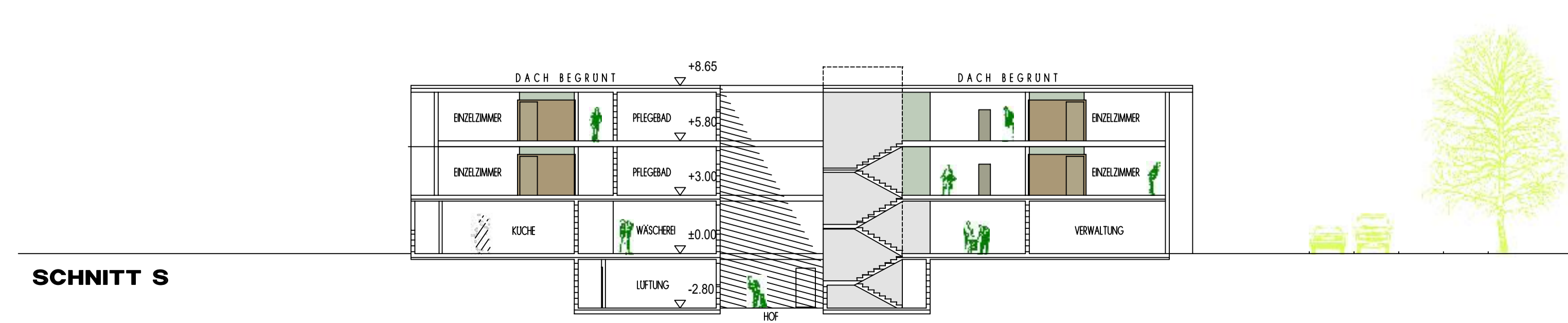
WEST



SÜD

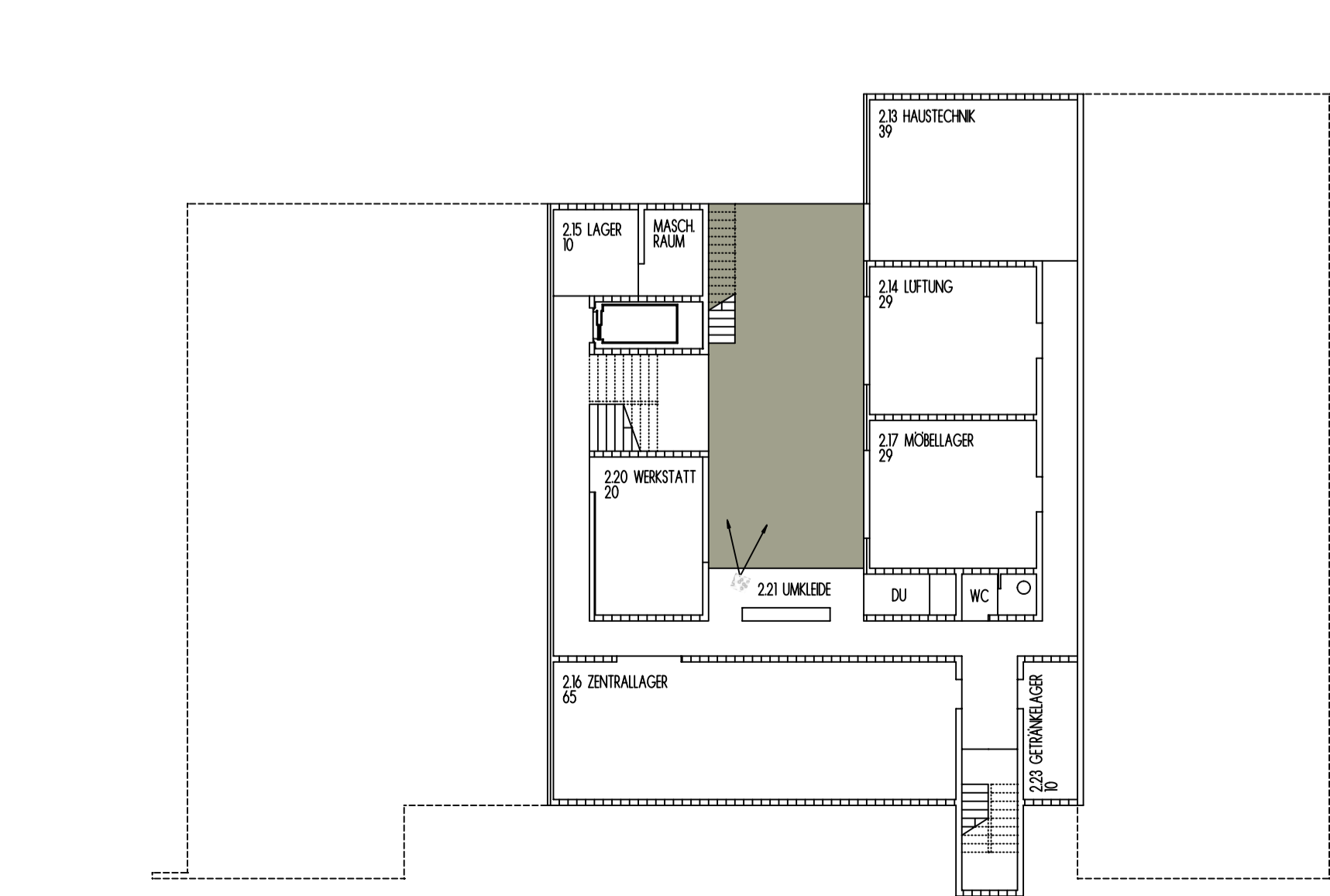


OST

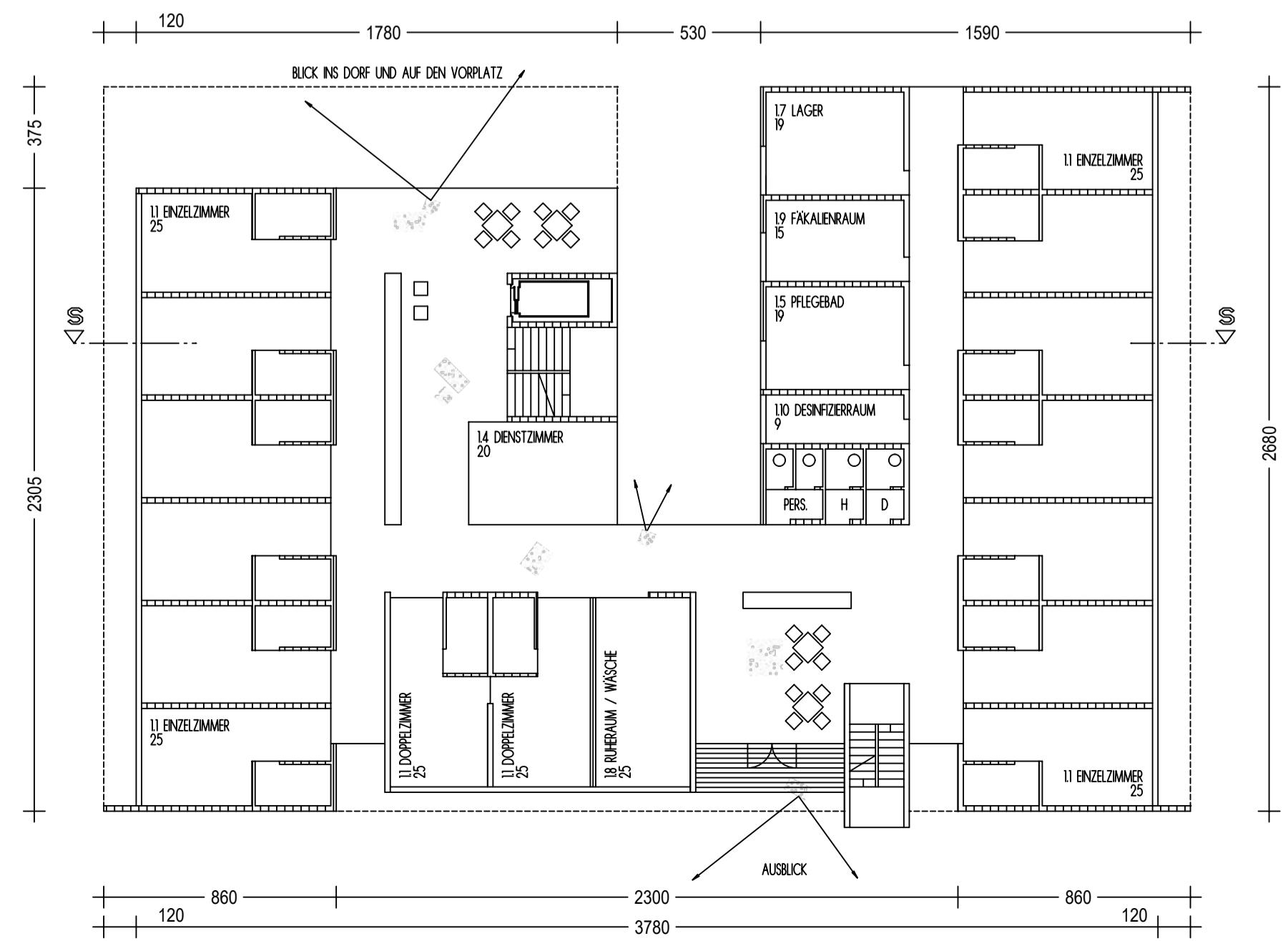


SCHNITT S

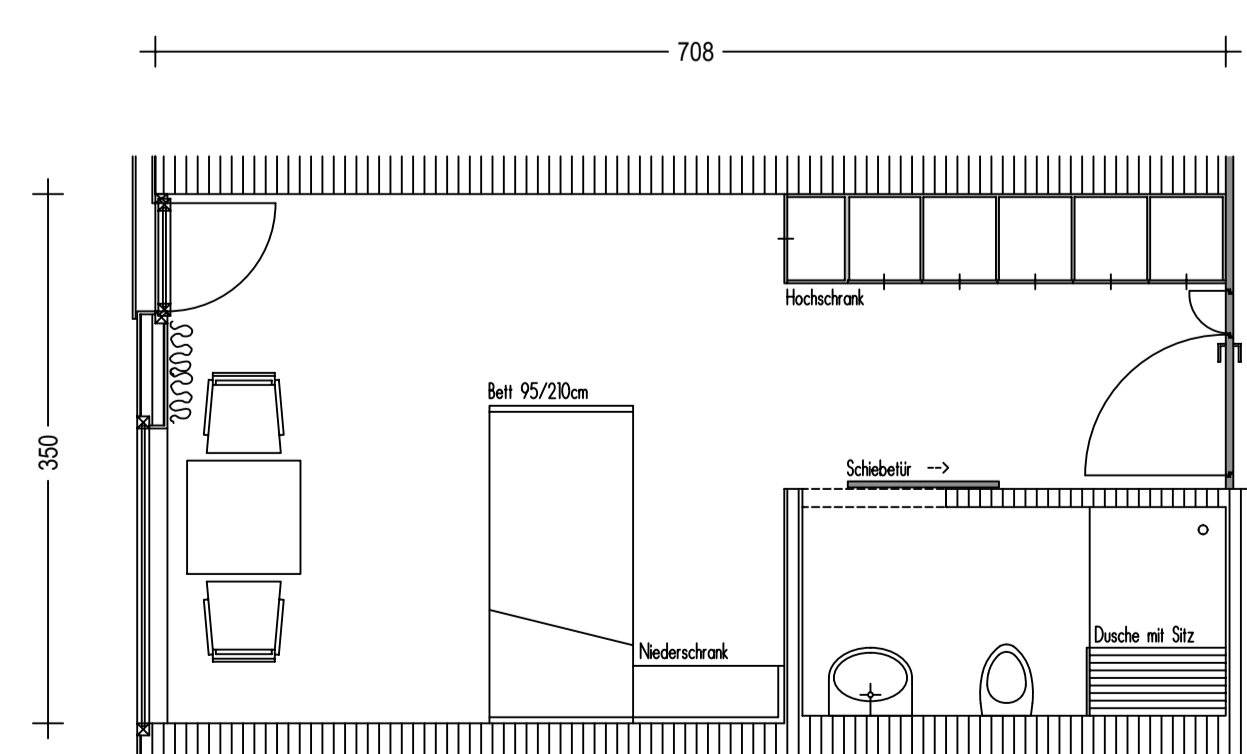
ANSICHTEN, SCHNITT M 1:200



GRUNDRISS: UNTERGESCHOSS M 1:200



1. UND 2. OBERGESCHOSS - STATION 1 UND 2 M 1:200



EINZELZIMMER M 1:50